

## PRODUCT

# 1S NAPOLI

Upholstery fabric category	CHENILLE
Material	100 % POLYESTER (PES)
Care label	

COTTA  
GROUP

## QUALITY FEATURES

The product meets the quality requirements of DIN EN 14 465:2006.



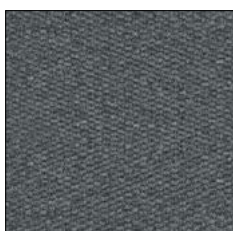
Abrasion resistance EN ISO 12947-1 & 2	>100,000 rubs
Pilling EN ISO 12945-2 - 2,000 rubs	4-5
Light fastness EN ISO 105-B02 - Vers. 2	5
Fastness to rubbing EN ISO 105-X12	4-5
Cigarette test DIN EN 1021-1	passed
Azo dyes	
Aryl amines in accordance with applicable legal provisions EN 14362-1 & 3	not verifiable
Allergenic dispersion dyes in accordance with DIN 54231	not verifiable

Further test results are available from Cotta Collection AG on request.

## COVER PROPERTIES

Light colours show soiling and denim abrasion faster and more clearly than dark colours. With light colours, colour migration can occur in combination with dark or intensive colours. Dark and intense colours tend to rub off. Pilling is unavoidable and can also be caused by the adhesion of foreign fibres. A slight streaking effect may occur due to the material. Slight variations in colour and texture between production batches are unavoidable and may occur. A certain amount of colour fading due to exposure to light or abrasion caused by wear and tear is inherent in the nature of a fabric. Every velour fabric will flatten with use, so pile layer changes/seat reflections are unavoidable. Changing colours depending on the incidence of light is in the nature of velour. Velour fabrics tend to be sensitive to scratching and pressure, which can result in pile loss.

Attention: Colour-contrasting seam only for approved models.



EIFFEL TOWER D262



SILVER LINING D263



CORNSTALK D264



GOLDEN ORANGE D265



BURNT OLIVE D266



BEETLE D267



NIGHTSHADOW D268



STANDARD 100 ZH015 181991 TESTEX

www.oeko-tex.com